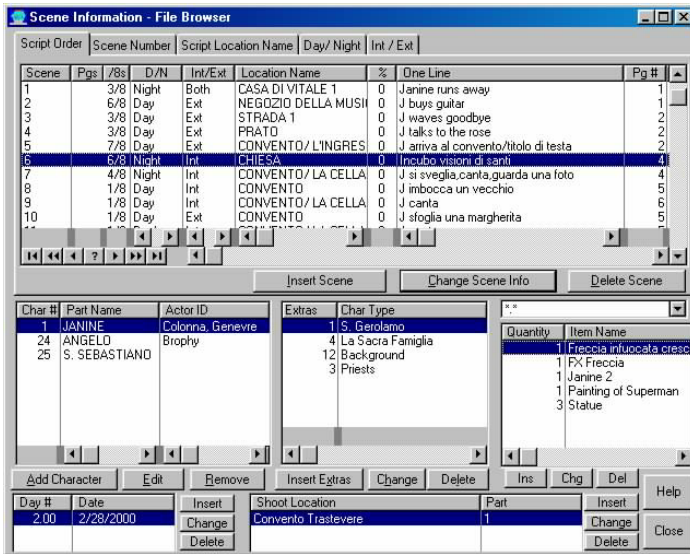




*M3S* is a full-featured software management tool for motion picture and

television production. Powerful yet easy to use, it provides storage and quick access to the large quantities of data required in filmmaking. By combining numerous functions within a single program, it remains useful from early preproduction right through the editing process. As a management tool it provides numerous ways to both view and print the data, providing an overview of the various production elements.

M3S views data in "browsing" screens which allow synchronized list boxes to provide instant access to related information. Because M3S utilizes standard database structures, additional features may be



customized for individual users. Furthermore, true multi-user functionality can be provided over a network, and eventually over a web server.

### Preproduction

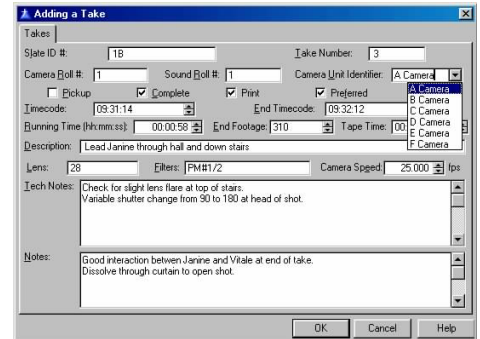
- ❖ M3S provides forms for inputting all the basic script breakdown information -- Scenes, page counts, day/night, int/ext, one-line descriptions, characters and extras in scene, etc.
- ❖ Drop-down lists with smart-fill and edit-in-place browse boxes simplify quick data entry.

# M3S

## *The Movie Manager*

### Product Overview

- ❖ Virtually unlimited user definable production item categories and linked component parts.
- ❖ Shot lists and storyboards in both shoot and script order.



### Production

- ❖ Basic scheduling functionality allows scenes to be related to shoot days, which are then assigned calendar dates.
- ❖ Scene breakdown copy feature speeds entry for similar scenes while allowing input changes.
- ❖ Script notes and camera and sound take data provide instant cross-referencing information.
- ❖ Automatically monitor film and tape usage.
- ❖ Keep track of numerous addresses (holding areas, catering location, management office, loading dock, etc.) for each filming site.
- ❖ Maintain databases of still picture filenames for locations, actors, screen capture stills, props, etc.
- ❖ Monitor running times and % scene completion.
- ❖ Pre-designed report forms generate numerous lists required for production.

### Postproduction

- ❖ Database can be sent electronically via e-mail to editing room or distant production office.
- ❖ Keep track of footage coming from various production units.
- ❖ Locate production information without paging through script notes, camera and sound reports.

### Minimum System Requirements

- Windows 95, 98, or 2000
- 24 Mb RAM
- 10 Mb Hard Disk Space
- Currently in beta testing. Some of above features are still being programmed, and many more are being added.

[www.OnSetSoftware.com](http://www.OnSetSoftware.com)

870 Sycamore Avenue Tinton Falls, NJ 07724 ph -- 732-530-7504 fax -- 732-530-4148 talk2us@onsetsoftware.com